

Institutional Locking Systems & Hardware



airteq.com

- Pneumatic
- Electro-Mechanical
- Mechanical
- Hardware

AIR//TEQ

Revised 06/02/2021

Pneumatic

Proven Dependability • Energy Efficient

Swing Locks (All Airteq Swing Locks perform to ASTM F1577)

Designed for use in both Adult and Juvenile Correction Facilities in the following areas:
Inmate housing areas, entrances, corridors, safety vestibules, administrative areas



AIRLOCK 9400

- Remote controlled 2" latchbolt lock with deadlatch
- Mortise key release

UL 1.5 HR CERTIFIED FIRE RATING



AIRLOCK 9500

- Remote controlled 2" internal latchbolt lock
- Mortise key release
- Surface-mount retrofit kit available
- Sliding door lock avail.

UL 3 HR CERTIFIED FIRE RATING



AIRLOCK 9600

- Remote controlled 4" latchbolt lock with deadlatch
- Mogul key release

UL 3 HR CERTIFIED FIRE RATING




AIRLOCK 9900

- Remote controlled 8" latchbolt lock with deadlatch
- Mogul or paracentric key release

UL 3 HR CERTIFIED FIRE RATING

Sliding Door Devices (All Airteq Sliding Door Locking Devices perform to ASTM F1643-95)



AIRGLIDE 8210

- A sliding door locking device with two point locking in both the open and closed positions. This maximum security device provides for remote pneumatic unlocking and manual movement of sliding doors for cells.

- 8215 - Mortise, mogul or paracentric hip high key release

UL 3 HR CERTIFIED FIRE RATING




AIRGLIDE 8220

- A pneumatic powered sliding door device with two point locking in both the open and closed positions. This maximum security device provides remote unlocking, locking and movement of sliding cell doors.

- Local individual, and remote group emergency release systems available

UL 3 HR CERTIFIED FIRE RATING



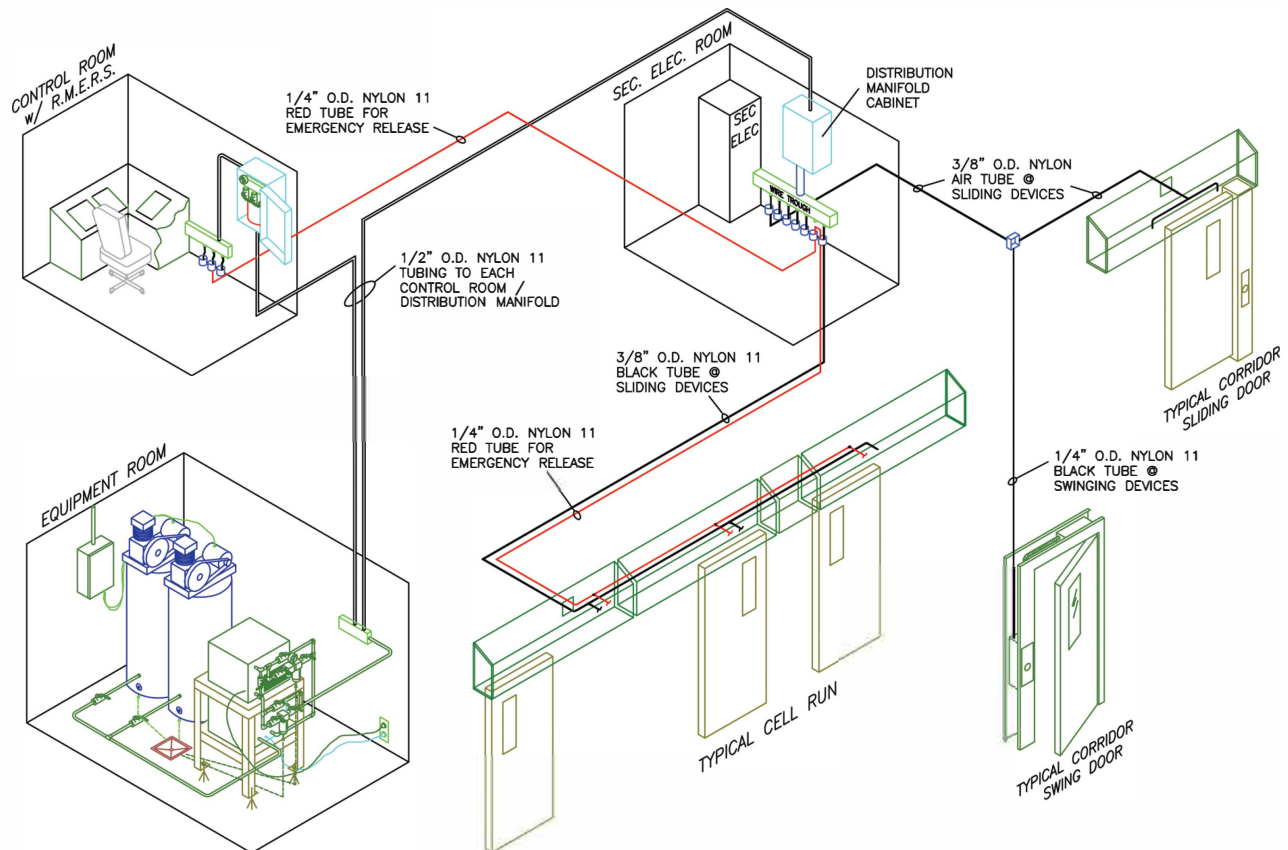
AIRGLIDE 8250

- A pneumatic powered sliding door device with two point locking in both the open and closed positions. This maximum security device provides remote unlocking, locking and movement of sliding doors for entrances, safety vestibules, corridors and sally ports.

- Mortise, mogul or paracentric key release

UL 3 HR CERTIFIED FIRE RATING

Pneumatic System Layout (003 Shown)



Electro-Mechanical

Proven Performance

Swing Locks (All Airteq Swing Locks perform to ASTM F1577)

Designed for use in both Adult and Juvenile Correction Facilities in the following areas:
Inmate housing areas, entrances, corridors, safety vestibules, administrative areas



MOTORLOCK 9424

- Remote controlled 2" latchbolt lock with deadlatch
- Mortise key release
- 24 VDC

1.5 HR CERTIFIED FIRE RATING



MOTORLOCK 9524

- Remote controlled 2" internal latchbolt lock
- Mortise key release
- 24 VDC
- Surface-mount retrofit kit available
- Gate mounts available
- Sliding door lock available

3 HR CERTIFIED FIRE RATING



MOTORLOCK 9624

- Remote controlled 4" latchbolt lock with deadlatch
- Mogul key release
- 24 VDC

3 HR CERTIFIED FIRE RATING



MOTORLOCK 9724P

- Remote controlled 7" latchbolt lock with deadlatch
- Paracentric key release
- 24 VDC

3 HR CERTIFIED FIRE RATING



MOTORLOCK 9912M

- Remote controlled 7" latchbolt lock with deadlatch
- Mogul key release
- 120 VAC
- Gate mounts available

3 HR CERTIFIED FIRE RATING



SOLENOID LOCK 9912S

- Remote controlled 7" latchbolt lock with deadlatch
- Mogul key release
- 120 VAC
- Gate mounts available

3 HR CERTIFIED FIRE RATING



MOTORLOCK 9924

- Remote controlled 7" latchbolt lock with deadlatch
- Mogul key release
- 24 VDC
- Gate mounts available

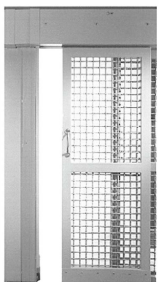
3 HR CERTIFIED FIRE RATING



SOLENOID LOCK 9712P

- Remote controlled 7" latchbolt lock with deadlatch
- Paracentric key release
- 120 VAC
- Gate mounts available

Sliding Door Devices (All Airteq Sliding Door Locking Devices perform to ASTM F1643-95)



MOTORGLIDE 7210

- A sliding door device with two point locking in both the open and closed positions. This maximum security device provides for remote electrical unlock and manual movement of sliding doors for cells.

▪ **7215** - Mortise, mogul or paracentric hip high key release

3 HR CERTIFIED FIRE RATING



MOTORGLIDE 7320

- The 7320 is a maximum security, electrically powered, motorized rack and pinion sliding door device for use in applications requiring full remote control of sliding doors. It provides for remote unlocking, locking and

movement of sliding doors for cell fronts.
▪ Local individual and remote group emergency release system available

3 HR CERTIFIED FIRE RATING



MOTORGLIDE 7350

- The 7350 is a maximum security, electrically powered, motorized rack and pinion sliding device for use in applications requiring full remote control of sliding doors. It provides for remote unlocking, locking and

movement of sliding doors for entrances, safety vestibules, corridors and sally ports.
▪ Mortise, mogul or paracentric key release

3 HR CERTIFIED FIRE RATING

Mechanical

Proven Durability • Cost Efficient



DEADBOLT 5010/5016

- For use on access panels, plumbing chases and other small swinging doors where the security of a deadbolt is required.
- **5010B** - Deadbolt with mortise cylinder
- **5010M** - Deadbolt with mogul cylinder



DEADLOCK 5060/5066

- A high security latch with key operated deadlock for use on cell, corridor, dayroom and other large doors where the convenience of a latch with key operation is preferred and the ability to deadlock is required.

3 HR CERTIFIED FIRE RATING



LATCH 5017/5017-6

- A medium security paracentric keyed lever tumbler latch for use on food pass, gun locker and other small swinging doors where slam-locking is preferred and deadlocking is not required.
- **5017B** - Slam lock with mortise cylinder
- **5017M** - Slam lock with mogul cylinder



DEADLOCK 5060K/5066K

- A high security latch with key operated deadlock for use on cell, corridor, dayroom and other large doors where the convenience of a latch with key and knob operation is preferred and the ability to deadlock is required.

3 HR CERTIFIED FIRE RATING



DEADLATCH 5030/5036/5030K

- A high security deadlatch for use on cell, corridor, dayroom and other sliding doors where slam-locking and the security of an automatic deadlatch are required.



DEADLATCH 5070/5076

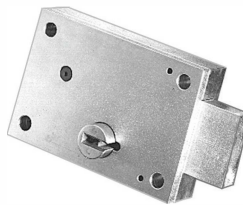
- A high security deadlatch for use on cell, corridor and other high use swinging doors where slam-locking and the security of an automatic deadlatch are required.

3 HR CERTIFIED FIRE RATING



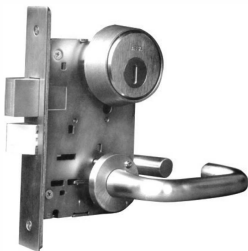
DEADLOCK 5030D/5036D

- A high security deadlock for use on cell, corridor, dayroom and other sliding doors. Recommended for doors which, at times, may be left open and unattended.



DEADBOLT 5080/5086

- A high security deadbolt for use on cell, corridor, dayroom and other large doors where the security of a deadbolt is required.
- **5080M** - Deadbolt with mogul cylinder



INSTITUTIONAL MORTISE LOCK 90000/92000

- Mortise locksets designed for medium and minimum security applications (cylinders ordered separately)
- Locksets prepared for mogul cylinder(s) - specify 90000
- Locksets prepared for mortise cylinder(s) - specify 92000
- Lever handles standard, knobs optional
- US32D finish

3 HR CERTIFIED FIRE RATING



LOCKING TRACKSET 7205/7205s

- A manually operated sliding device with one or two point locking in both the open and closed positions. This maximum security device provides for manual locking and movement of sliding doors for corridors and cells.
- Mortise, mogul and/or paracentric hip high key release available
- For single point locking, combined with 5030/5030D series lock.

3 HR CERTIFIED FIRE RATING

Airtec hosts training seminars for product installation and maintenance at our Montgomery, Alabama headquarters. Call 1-800-466-3007 for information.

Detention Hardware

Tough • Quality Built



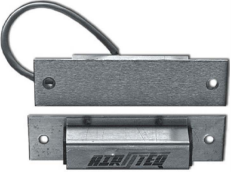
DPS 6100

Stainless steel, mortise-mount mechanical, high security door position switch for door frame installation. Used in access-sensitive areas.



DPS 6150

Stainless steel, surface-mount mechanical, high security door position switch for door frame installation. Used in access-sensitive areas.



DPS 6200

Stainless steel, mortise-mount, four-reed, high security door position switch for door frame installation. Used in access-sensitive areas.

- Surface mounted kit available



DOOR STOP 650

This door stop is designed for use with door hardware with up to a 2 1/4" projection. The 2" diameter, black silicone rubber bumper is mounted on a 5/8" X 2 1/2" steel shank for permanent attachment in grout filled masonry block or concrete. It can be wall or floor mounted.

- 651 Door Stop - 2" dia, 1 1/2" tall also available

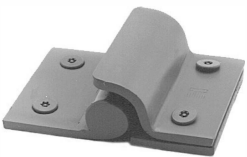


INSTITUTIONAL MORTISE HINGE WITH SECURITY STUD 604 FMCS

Made from investment cast 304 stainless steel. Hinge is 4 1/2" X 4 1/2" X 3/16" thick, with hospital tip and maintenance-free bearing assemblies.

AVAILABLE OPTIONS:

- 604FMC - without security stud
- 604FMC-CE - with concealed through wire for electric applications (not load-bearing)



FOOD PASS HINGE WITH STOP 603FP

This surface mounted hinge is used on food pass doors. Hinge is provided with a stop that restricts hinge rotation to 90 degrees, allowing the food pass door to act as a shelf. Hinge is 3" X 4" X .210" thick steel, with a fully welded pin.



PRISON HINGE 603

This hinge can be used for many prison applications, including access panels and weapons lockers. Hinge is 3" X 4" X .210" thick steel with a fully welded pin.



MOGUL CYLINDER

This high security 6 pin tumbler mogul cylinder provides more key combinations than standard five tumbler models. This feature, combined with the sheer physical size of the Airteq cylinder, provides the user with the highest security uni-axial mogul cylinder available.

- ASSA high security mogul & mortise cylinders also available.



PULL HANDLE 612

Investment cast, stainless steel, US32D. Overall length is 8 3/4". Projection is 2 3/16".



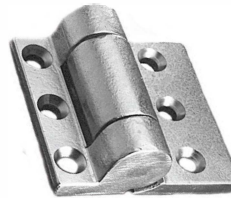
KNOB PULL 613

Stainless steel, US32D. The diameter at the base is 3 1/4". Projection is 2 1/4" and knob diameter is 2 1/4".



FLUSH PULL 614

Investment cast, stainless steel, US32D. The size of the face plate is 4" X 5" X 1/8".



PRISON HINGE 605

This heavy duty surface mounted hinge is designed for use with the heaviest of doors. Hinge is 5" X 6" X 1/2" thick cold rolled steel. This 800 lb. capacity hinge features self-lubricating radial and thrust bearings for ease of operation in high use areas and a hardened alloy steel pin for added security.

- Full surface, full mortise, half mortise, and gap applications available.



INMATE PUSHBUTTON 6300

This heavy duty switch assembly is designed specifically for the detention environment. When enabled from a control station, it will allow inmate operation of cell door locks or can perform as an inmate call button. This momentary switch assembly can be used in either 24VDC or 125VAC applications. Stainless steel.

For complete information on any Airteq product, call 1-800-466-3007 or visit www.airteq.com

RETROFIT

SOLUTIONS

Great Affordable Solutions for:

- ✓ Replacing obsolete or sub-standard locks
- ✓ Adding remote capability to existing manual doors

AIRTEQ® 9500/9524 SERIES RETROFIT KIT

allows for the replacement of existing locks from any manufacturer with a high security Airteq® motorized (9524) or pneumatic (9500) lock.

Kit consists of a lock-tube which is welded to the existing frame and a strike/pull plate which is mounted to the door. Available for keyed one side and keyed both sides application.

The lock-tubes can be provided in standard 36" height, a custom height to run from floor to ceiling, or any size in between.

Surface Mounted

LED Secure Door Indicator Option

Integral Security Door Position Switch (DPS) Available

Existing Mortise Key Cylinders May Be Reused If Desired

Clean Out Port Option

AIRTEQ DEFENDER

allows for the replacement of existing locks from any manufacturer with a high security UL Listed 9900 Series electric lock.

ASTM 1450-12 - Lock Pocket Assembly Impact Tested
Surface Mounted

Anti-Suicide Design

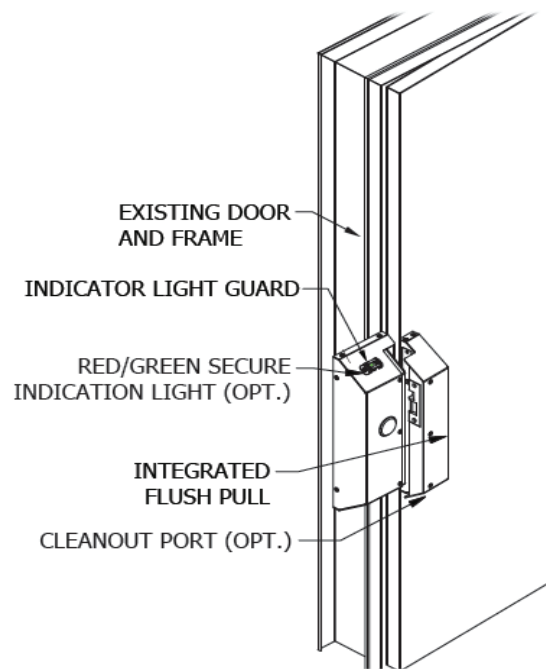
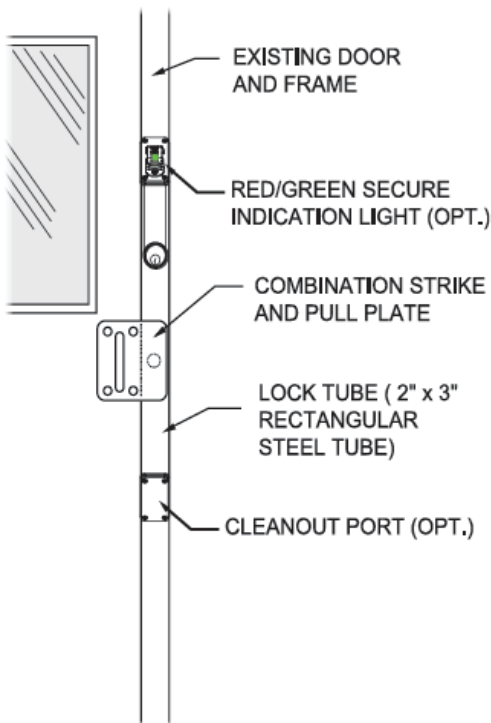
Designed To Prevent 'Sheeting' Or 'Popping' Of The Latchbolt

Existing Mogul Or Mortise Key Cylinders May Be Reused If Desired

Integral Security Door Position Switch (DPS) Available

LED Secure Door Indicator Option

Clean Out Port Option



AIRTEQ

2511 Midpark Road • Montgomery, AL 36109 • 800.466.3007 • airteq.com